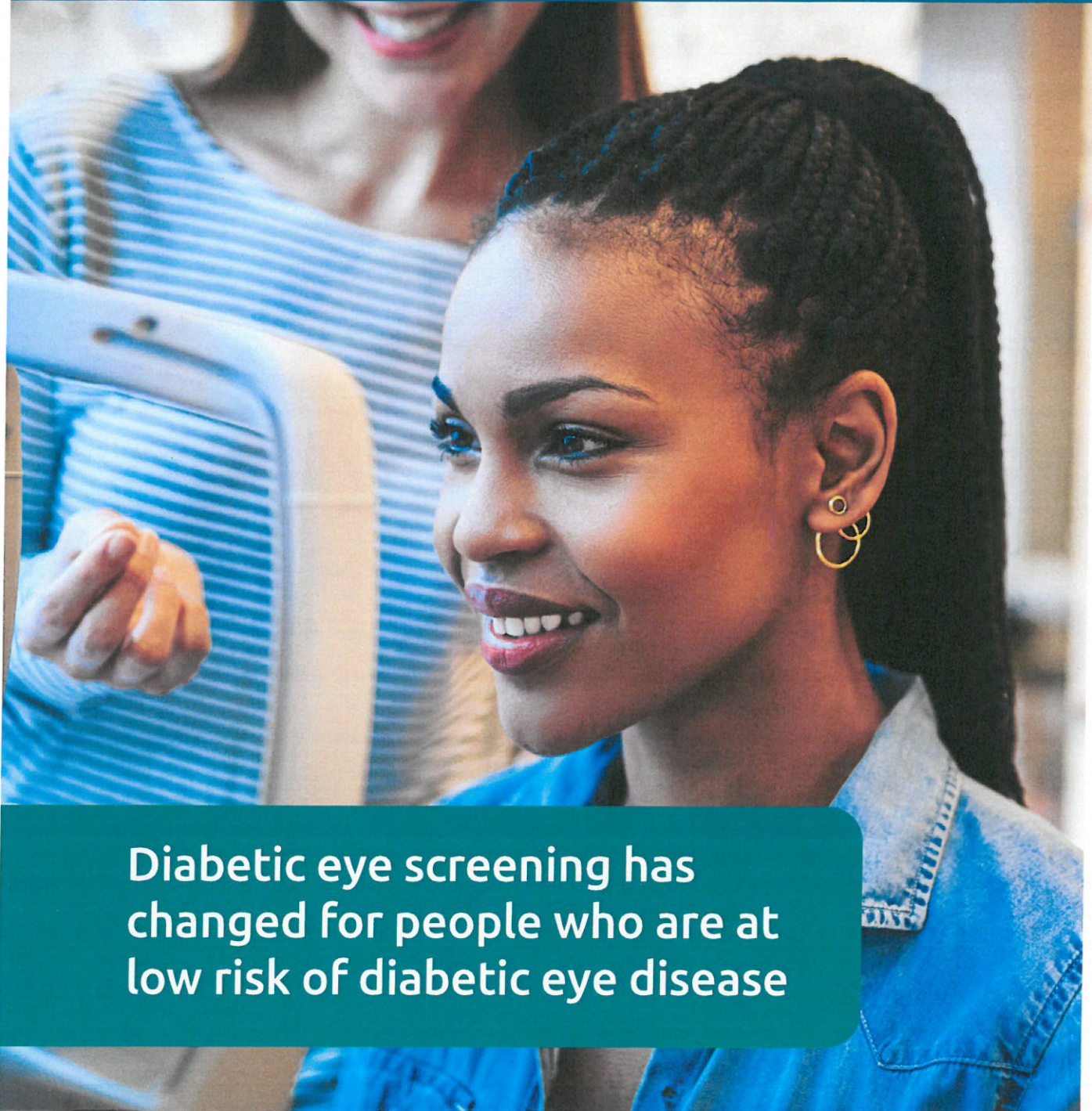




GIG
CYMRU
NHS
WALES

Iechyd Cyhoeddus
Cymru
Public Health
Wales



Diabetic eye screening has
changed for people who are at
low risk of diabetic eye disease



Sgrinio Llygaid Diabetig Cymru
Diabetic Eye Screening Wales

If your last two diabetic eye screenings found no sign of diabetic eye disease, you will now be safely screened every two years instead of every year.

Everyone else will be screened as usual.

This leaflet tells you about the change and why it has been made.



What has changed for people at low risk of diabetic eye disease?

People who are at a low risk of diabetic eye disease will now be invited for screening every two years instead of every year.

Why has this change been made?

Evidence shows that if no diabetic eye disease is found, it is safe to be screened every two years. This change will help us see people at higher risk of diabetic eye disease sooner.

This change has been recommended by the UK National Screening Committee and Wales Screening Committee. It has already been made in Scotland and Northern Ireland.



What does 'low risk of diabetic eye disease' mean?

You are at low risk if your last two diabetic eye screenings found no signs of diabetic eye disease.

Who is eligible?

You will be invited for screening every two years if:

- you are aged 12 or over and have type 1 or type 2 diabetes
- and**
- your last two screenings found no sign of diabetic eye disease.



What happens if I'm pregnant?

If you are pregnant, you will be screened more often. This is because you are at a higher risk of diabetic eye disease during pregnancy.

Will I always be called every two years?

You will be invited for screening every two years as long as no changes are found at your screening appointments. If changes are found, you will be screened more often.



What if I develop eye disease between screening appointments?

Evidence shows that if no diabetic eye disease is found, it is safe to be screened every two years.

If diabetic eye disease does develop in the two years between your screening appointments, it will be found at an early stage, when you will have the best chance of successful treatment.



What if I notice any changes to my eyesight or I am worried about my eyesight between screening appointments?

If you notice any changes to your eyesight, contact your local optometry practice straight away.

Do not wait for your next screening appointment.



For more information:

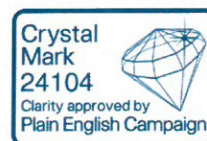
Website: phw.nhs.wales/desw

Phone: 0300 003 0500

Email: deswenquiries@wales.nhs.uk



You can contact us in Welsh or English. It will take us the same amount of time to answer you, whichever language you choose.



GIG
CYMRU
NHS
WALES

Iechyd Cyhoeddus
Cymru
Public Health
Wales



Sgrinio Llygaid Diabetig Cymru
Diabetic Eye Screening Wales